

The Housing Sector in 2040

Ruth Glassborow
Director of Improvement
Healthcare Improvement Scotland

Improvement Hub
Enabling health and
social care improvement

£135 million

What segment of our population accounts for:

8% of total population

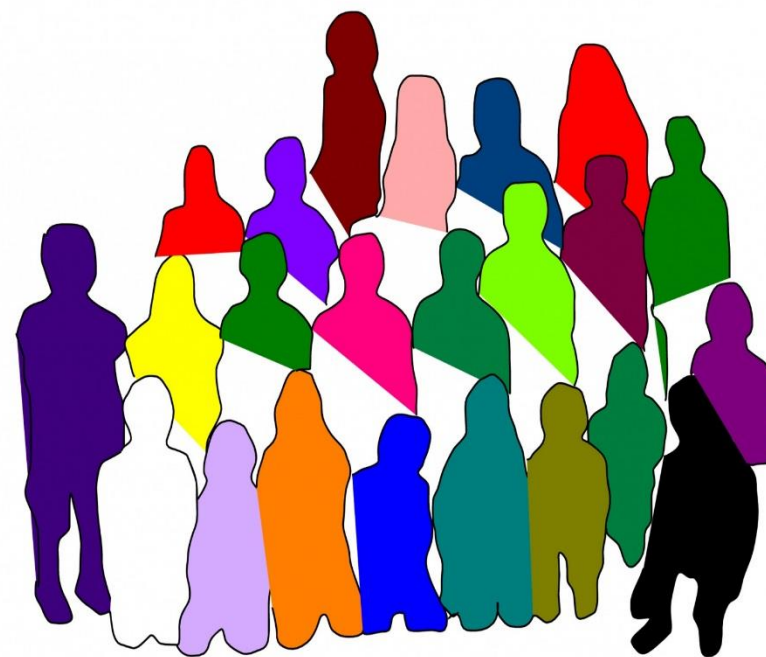
55% of 2.12 million Accident and Emergency Attendances

52% of 2.27 million Acute Hospital Admissions

49% of 9.01 million Outpatient Appointments

66% of 9.49 million Dispensed Prescriptions

80% of 100,000 admissions to Mental Health Specialties



2040 - virtualisation of healthcare will mean more and more care delivered at home



2040 - virtualisation of healthcare will mean more and more care delivered at home



2040 - virtualisation of healthcare will mean more and more care delivered at home

£15m new Artificial Intelligence centre for Scotland to innovate and transform healthcare

Tuesday 6 November 2018



Scotland is to have its own £15.8m artificial intelligence (AI) health research centre, which promises to enable better patient diagnosis, treatment and outcomes.

Telehealth

- Telemedicine
- Disease Management
- Lifestyle Management

Patient Facing

- AI Chatbots
- Wearables
- Personalised Genetics

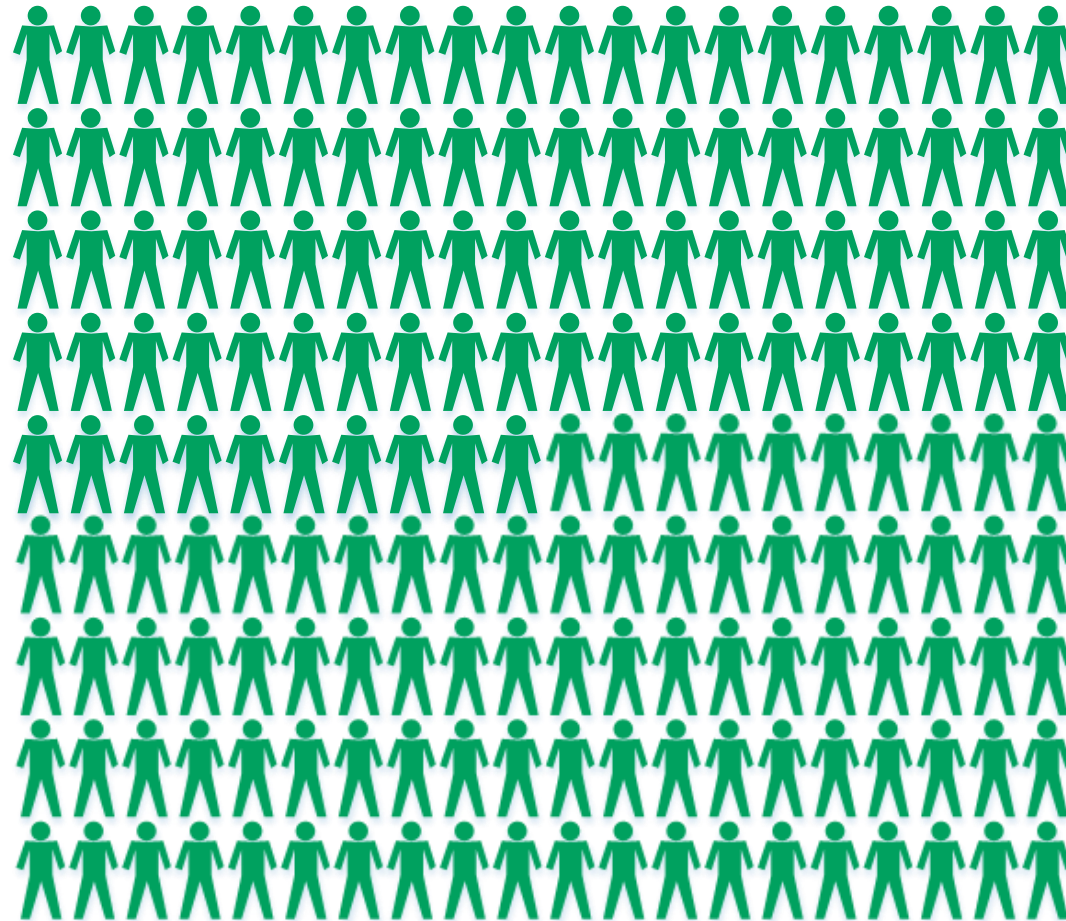
Doctor Facing

- Medical Records
- Data Analytics
- Medical Imaging

Research

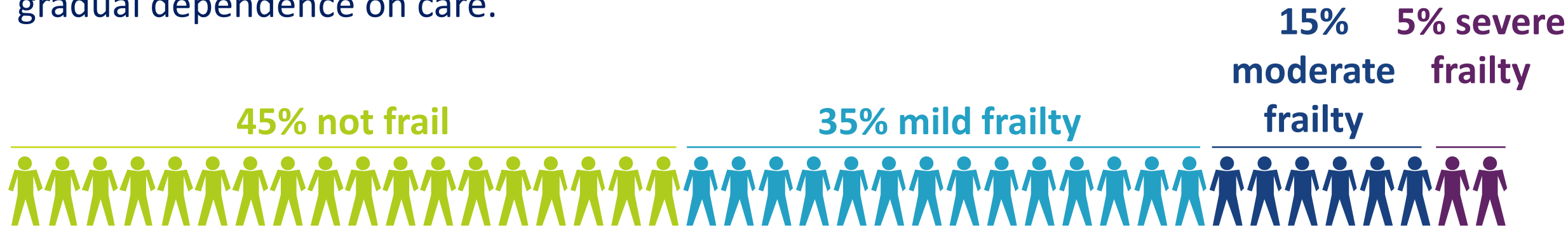
- Drug Discovery
- Genetic Research
- Information and Clinical Trials

2040 – more individuals living at home with dementia



2040 - more individuals living at home with frailty

A form of complexity, associated with developing multiple long-term conditions over time leading to low resilience to physical and emotional crisis and functional loss leading to gradual dependence on care.



Average cost of unplanned admission cost per person per year

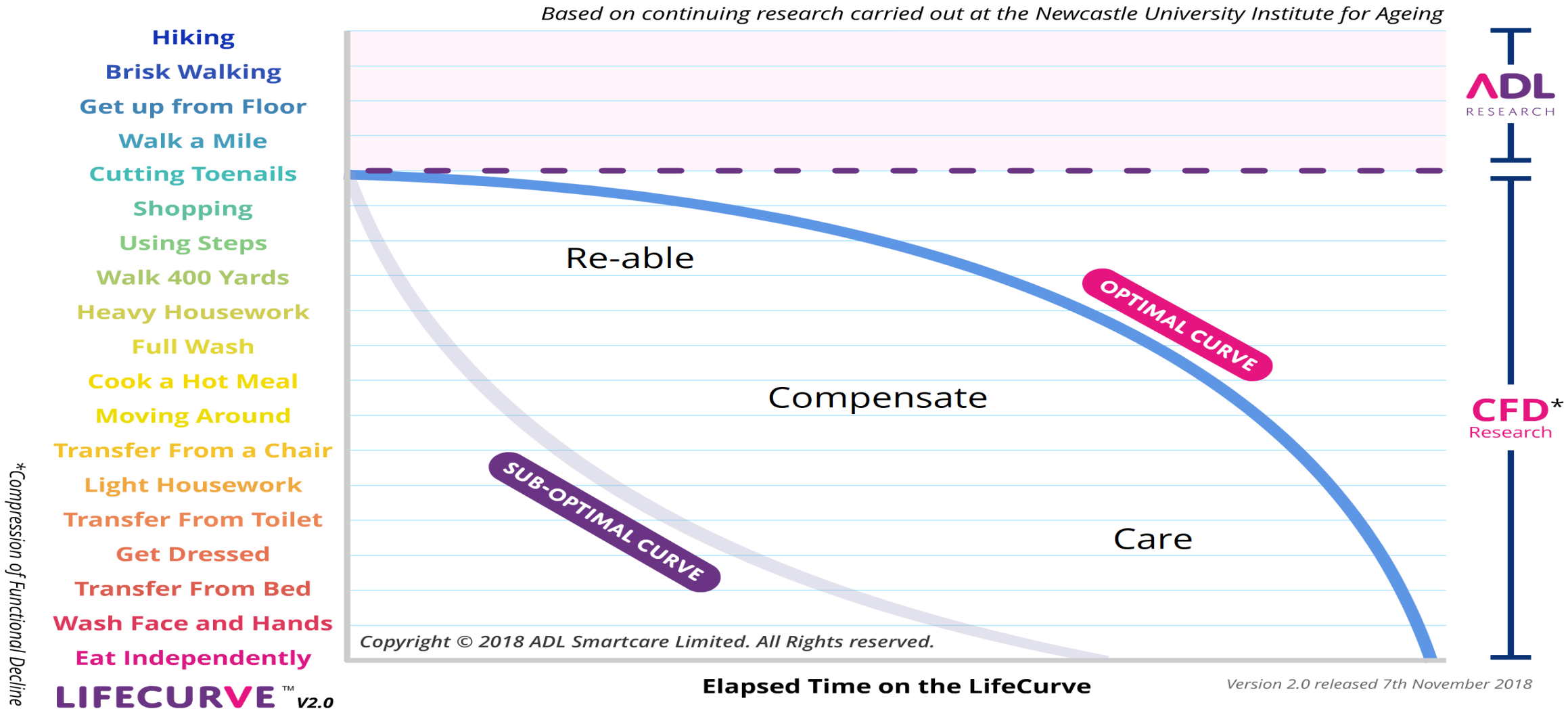
£1,119 **£3,175** **£5,800**

Extrapolated cost of unplanned bed days across Scotland per year

£1.71 billion

People 65 years and older registered with General Practice in ihub frailty sites.

How might we support people to stay on the optimal curve?



30 - 50% of older people are socially isolated and/or lonely and this impacts on their physical and mental health.



What is the equivalent for older people?

Summary proposition for 2040

An integrated health, social care and housing system is our only hope for affordable and high quality support for those most in need.

We need to work together with communities and people who access our services to co-design what that looks like in practice.

Keep in touch

 hcis.phh@nhs.net

 [@ihubscot](https://twitter.com/ihubscot)

[@ihub_PHH](https://twitter.com/ihub_PHH)

To find out more visit ihub.scot