



Where Social Care Meets Social Justice Every Day

Housing Support as part of a National Care Service

Opportunities for Collaboration, Integration & Transformation

Iain Macfarlane

CEO Blue Triangle

m 07834 658 980

e imacfarlane@btha.org.uk

*'If the map and the terrain
disagree, believe the terrain.'*

Swiss Army Manual

“There is growing recognition that disadvantages or harms such as poverty, mental ill health, drug misuse, violence or homelessness put you at much greater risk of others. What is striking is the extent to which some disadvantages appear to be growing out of failures to deal with others. Attempts to ration increasingly scarce resources are pushing demand elsewhere, creating further harm in the process.”

Hard Edges Scotland Report, June 2019

“I wish people would stop trying to fix me issue by issue.”

Scott, Supported Person, Blue Triangle, November 2020

Who We Are & What We Do

Intersection of Social Care & Social Justice

Implications of a NCS for Housing Support

Opportunities for Collaboration

If Not Now, When?

Housing Support and a National Care Service

Headlines....

“The cross cutting issue is the fundamental inability of local and national service systems to address the needs of people who present with a range of complex and interacting needs, especially if accompanied by the challenging forms of behaviour that are often manifest in people coping with the long-term effects of sustained trauma, including ACEs.”

Hard Edges Scotland Report, June 2019



... 'homelessness' versus 'wellbeing'



...empowering people to thrive



...intersection with social justice



...places, spaces, support, connections



...collaboration: prevention - belonging

Housing Support and a National Care Service

Implications....

“National and local partnerships are key to leading sustained and effective change. That means we need to work across and outside traditional boundaries and continue to develop collaborative approaches.”

Ending Homelessness Together, November 2018



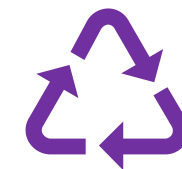
... higher end – support & transition



...highest end – life-long support



...is ALL about person-centred wellbeing



...services and connected communities



...funding, commissioning, ecosystem

Housing Support and a National Care Service

Opportunities....

“We are making A Call to Action to turn the tide on poor outcomes created – often unwittingly – by barriers in the systems that shape how our society works. A Call to realise in full the change we now know is possible. We are not suggesting small improvements to make some things better and some things "less bad." Now is the time to accelerate system change.”

Social Renewal Advisory Board, 'If Not Now, When?', January 2021



...asset-based, collaborative working



...social renewal in action



...Recovery & Wellbeing Villages



...Tenant Guarantor Model



...Connected Community Model



Wellbeing Villages with Scottish Football Clubs

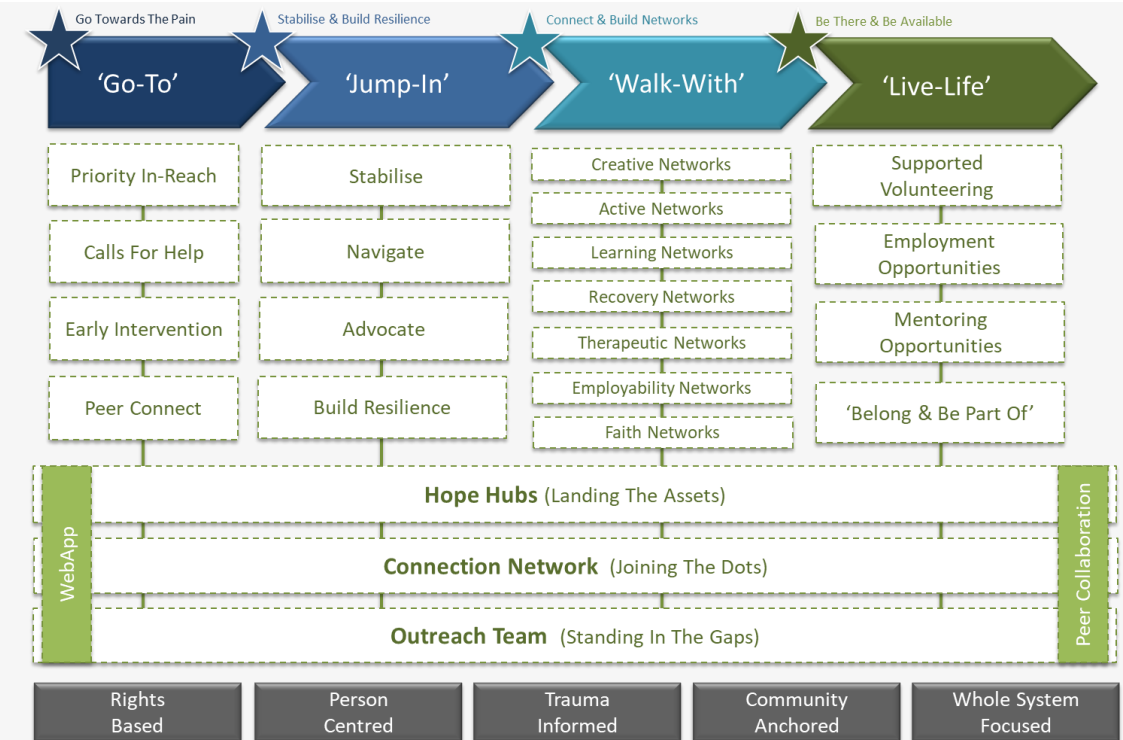
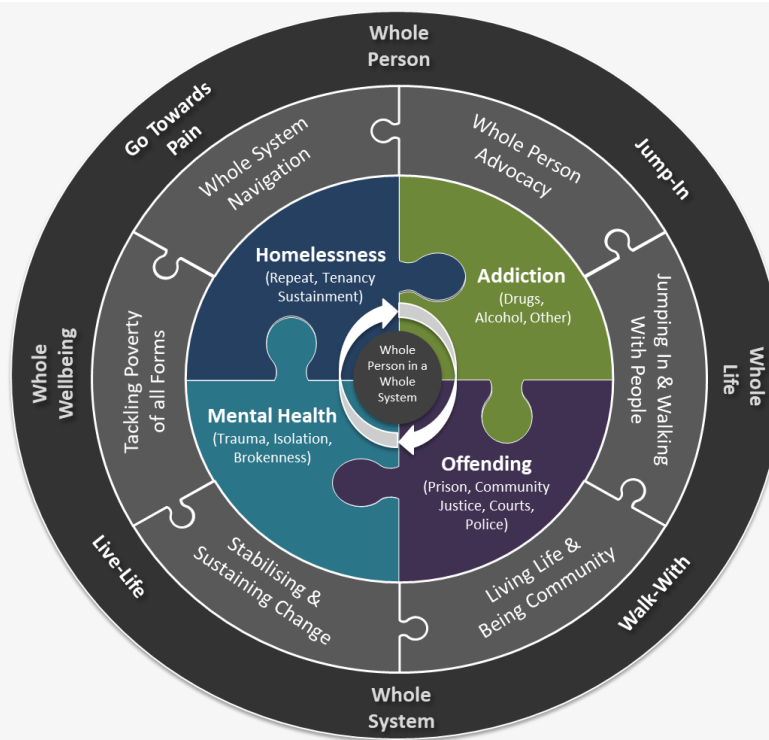
[Recovery and Wellbeing Village Solution Outline](#) *(Click Link)*

- Harness assets – stadia, fans, sponsors, community trusts
- Cathedrals of the People
- Asset-Based & Community Anchored
- Public Social Private Partnerships (PSPPs)
- Wellbeing Village as part of a Connected Community
- Demonstrator with Hamilton Accies FC
- 24 Bed Rehabilitation & Recovery Centre and 24 Transition Flats
- National Mission to Save & Improve Lives – 3117 deaths in 2019
- Call to Action for Social Renewal
- Repeatable Model Across Scotland
- Social Care & Social Justice Focus

Connected Community Model

[Connected Community Model - South Lanarkshire](#) *(Click Link)*


- Connections, Hope, Identity, Meaning, Empowerment
- Peer Mentors, Connectors, Advocates and Navigators
- Connection Network (Recovery, Creative, Active, Therapeutic, Volunteering, Employability – Community Connections)
- Changed People Changing People
- Stand in the Gaps & Join The Dots
- Call to Action for Social Renewal





“I'm ready for selection again should the current Scotland manager, Stevie Clarke, require my services”

#AMAZINGJOHN
#AMAZINGPEOPLE



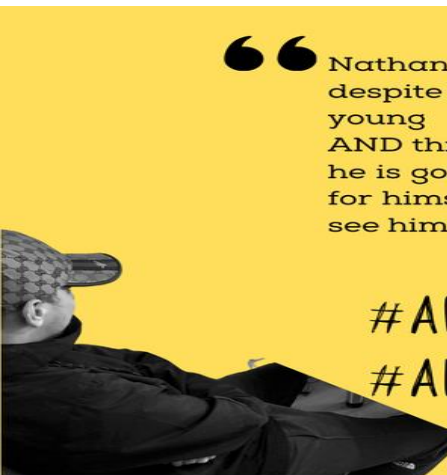
“For the first time ever, James has been focusing on his personal development and investing his energy in his recovery.”

#AMAZINGJAMES
#AMAZINGPEOPLE



“I always wanted to come back to Blue Triangle. Now I hope to go on to do my SVQ in Health and Social Care.”

#AMAZINGALANA
#AMAZINGPEOPLE



“Nathan is living proof that despite hurdles in childhood, young people can survive AND thrive. We just know that he is going to build a great life for himself and cannot wait to see him continue to flourish!”

#AMAZINGNATHAN
#AMAZINGPEOPLE

Our Theme for 2021 is **#AMAZINGPEOPLE**. We're publishing Stories of Hope from the amazing people we nurture and support and from our amazing workers. We want to change the narrative about homelessness as there is ALWAYS hope and everyone has amazing potential to thrive and to fulfil their dreams

#AMAZINGPEOPLE

Why not watch our Homelessness & Hope video and Mental Health & Hope video produced by two of our fantastic support workers. It's all part of our **#AMAZINGPEOPLE** theme for 2021



Homelessness & Hope



Mental Health, Support & Hope

Iain Macfarlane
CEO Blue Triangle
m 07834 658 980
e imacfarlane@btha.org.uk