



Making Homes and Lives Better From Every Angle

Our strategy to support victims/survivors of domestic abuse

Jennifer Anderson
Group Protection Liaison Manager



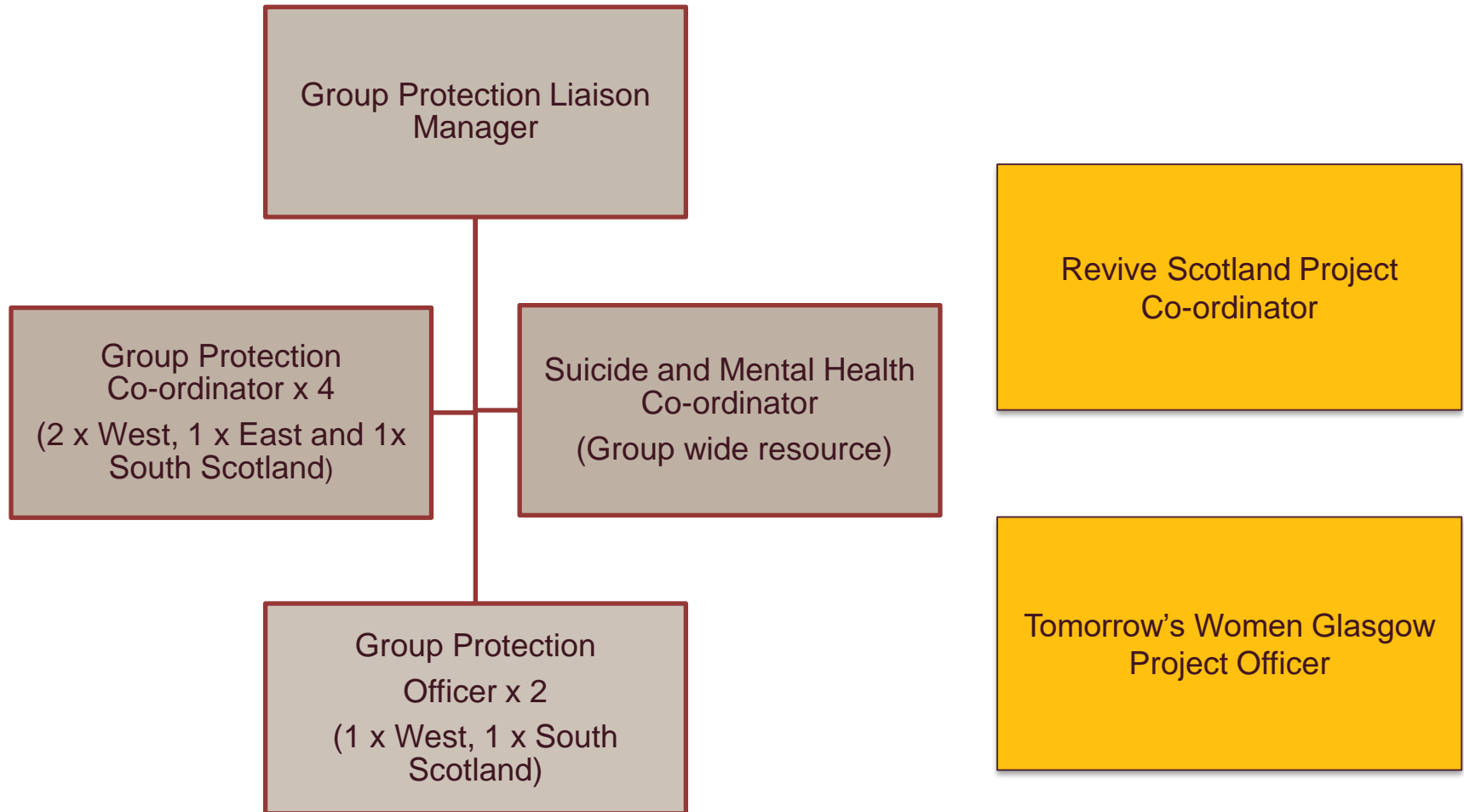
In partnership with



Date: 5th August 2021

Wheatley response

Specialist Group Protection Team



Group Protection Team

Role and remit



Domestic Abuse Supporting policies

Domestic Abuse Policy

Approved by Wheatley Group Board April 2017
Updated April 2019

Housing Information, Advice, and Letting Policy Framework

Domestic Abuse

Informing and educating our frontline

Staff training

Collaborative training programme created in partnership with SafeLives – co-designed and co-delivered for a tailored training package to meet the needs of housing professionals

Recognising and Responding to domestic abuse

Asking that crucial question of a victim – are you at risk?

Legislation overview and focus on coercive control

How domestic abuse manifests and is experienced by those impacted

What are the barriers to leaving an abusive relationship

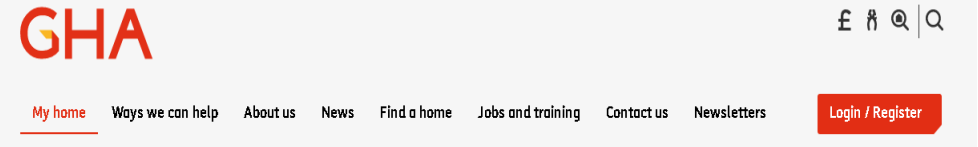
Completion of DASH Risk Indicator Checklist

Referral pathways and specialist support services

Crucially it covered the role and remit of housing and care in dealing with domestic abuse and supporting our customers affected



Customer engagement Communications strategy



[Home](#) > [My home](#) > [My safety](#) > Domestic abuse

Domestic abuse

Anyone can be a victim of domestic abuse.

Domestic abuse happens in our communities and right across the country.

Abusers and victims can be male or female, any race or religion and from all different types of background.

Domestic abuse has a big impact on children, even if they're not directly experiencing abuse.

It can go on for a long time and often gets worse over time. It can be life threatening.

Domestic abuse is carried out by partners or ex partners. It can be:

- > intimidation, degradation, isolation and control, with the use or threat of physical or sexual violence
- > emotional or psychological
- > physical
- > sexual
- > financial
- > harassment and stalking
- > online or digital abuse.

We've signed up to the Chartered Institute of Housing's 'Make a Stand' campaign to help tackle domestic abuse. If you want to know more and how we can help, please speak to your housing officer.

Latest news



Grandkids help sow seeds of garden idea

It was a visit from her grandkids in lockdown that got GHA tenant Tricia Anderson thinking.



Key element Partnership Working

Domestic Abuse
Investigation Unit

Women's Aid

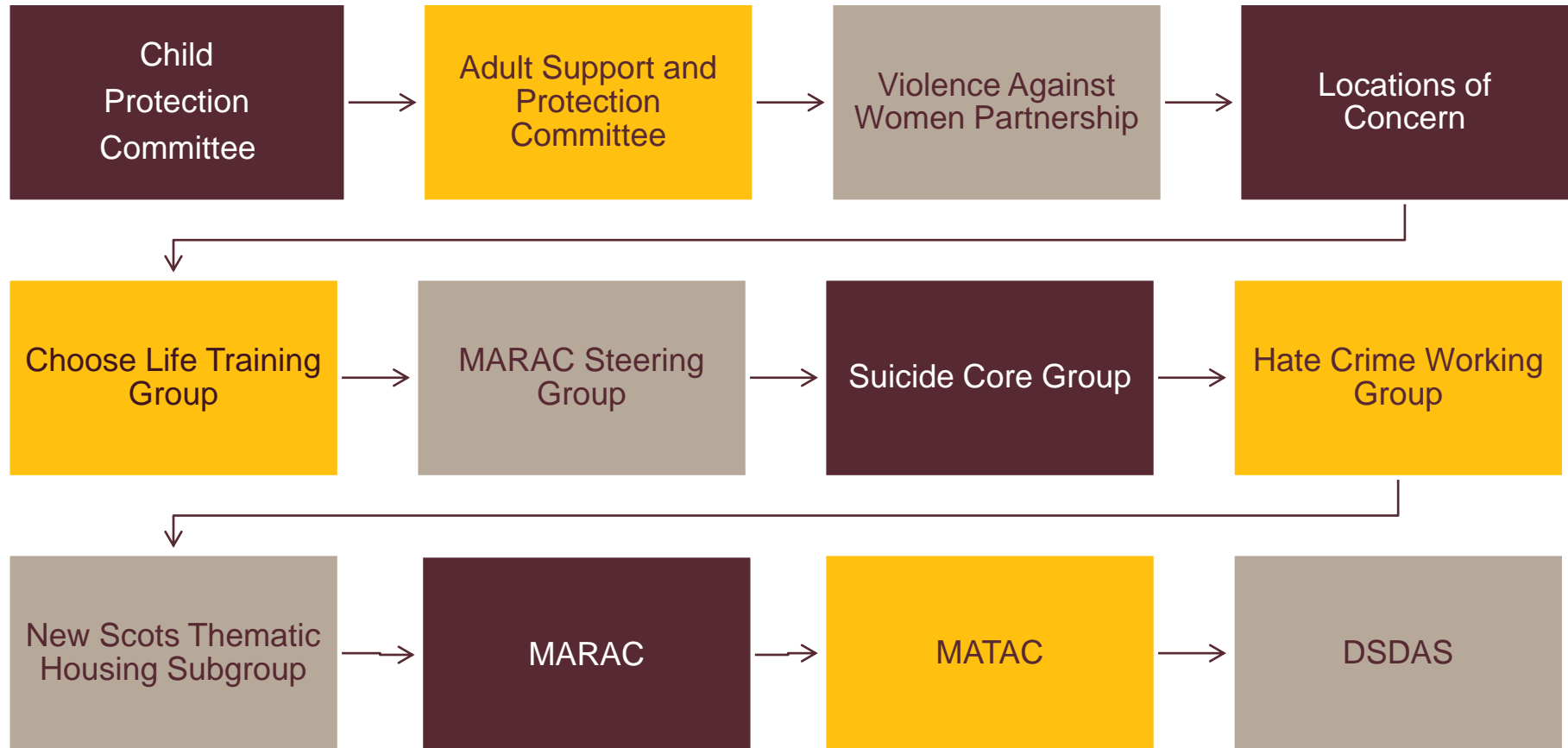


ASSIST

Court Support Teams

Key element

Strategic/Operational meeting attendance



Wheatley Group

Internal wraparound support options



Group Protection Team

Staff supports

Protecting People ▾

Domestic Abuse ▾

MAPPAs ▾

Child Protection ▾

Adult Support and Protection ▾

Mental Health ▾

Suicide Prevention ▾

Hate Crime (inc 3rd Party Report) ▾

Illegal Money Lending ▾

New Scots Action Plan ▾

Latest news ▾

Group Protection Bulletin ▾

Administration ▾

Coronavirus: guide to working through the crisis

Rent Matters

New Build and Regeneration

Protecting Communities

Neighbourhood Environmental

Asset Strategy

Repairs Matter

GoMobile

MyHousing

Protecting People

Universal Credit

Talk to us campaign



Group Protection Team

The Group Protection Team is part of Wheatley 360, our wraparound support division.

We have responsibility for implementing policies and processes to keep our customers and communities safe.

You can find out more about the ways we do this in the sections below.

Our contact details:

Email: [#Group Protection](#)

Latest updates



Dumbarton Women's Aid
Flyer

Dumbarton Women's Aid
Flyer

by Anne Marie Kite

20 days ago

0 0 0



DOMESTIC ABUSE
GUIDANCE NOTE

03.03.2021

Useful information

Guidance
documents

Specialist services
information

Policies/procedures

Latest news/updates

Key contacts

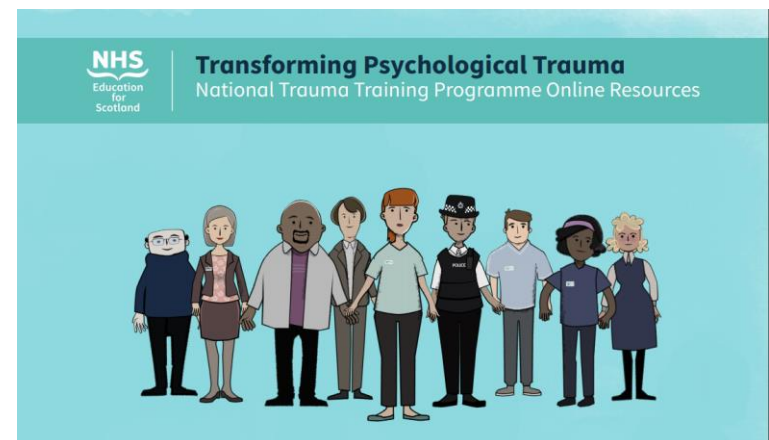
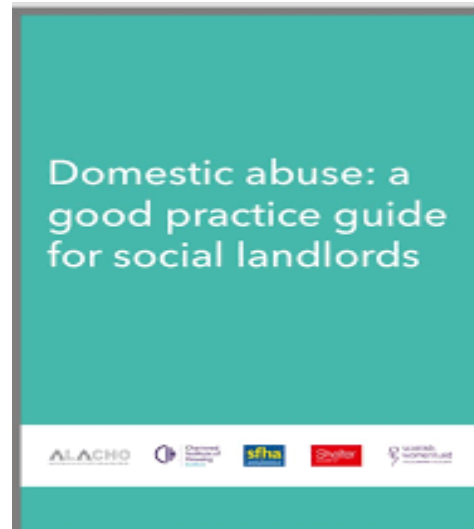
Wheatley approach

Strategic engagement - Local and National Level

Wheatley
360



women's aid
until women & children are safe



Wheatley
360 