

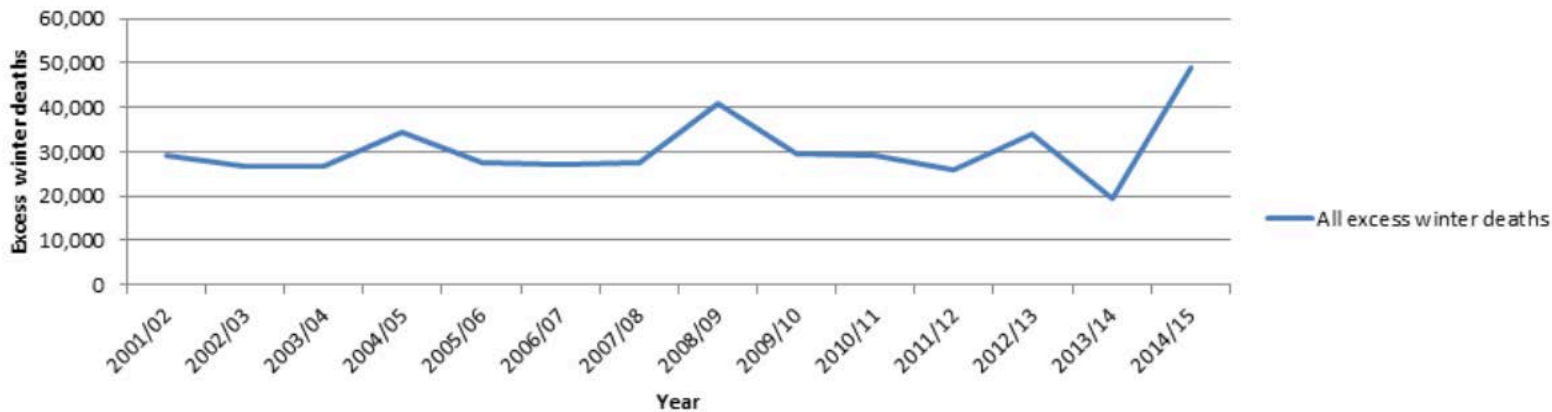
> Desirable, warm, affordable
homes for life

*Energie
Sprong
uk*

The problems to solve



All excess winter deaths 2005/06-2014-15



Zero energy buildings by 2050





In the UK, each year:

- > £5.2bn spent on existing social housing stock
- > £4.2bn spent by social housing tenants on energy



Energiesprong
turns that into
productive investment
to make our homes fit
for 2050











>UK New Build



>UK Retrofit



Nottingham City Homes

‘Before’,
October 2017



Nottingham City Homes

‘After’

January 2018



Nottingham City Homes

During
November
2017



Nottingham City Homes

During
November
2017



> How we get to net zero – the Energiesprong way



Ask for a new product



ASSURED QUALITY

30+ years performance guaranteed



AFFORDABLE

Financed from energy & maintenance savings



NON-INTRUSIVE

Refurbishment within one week

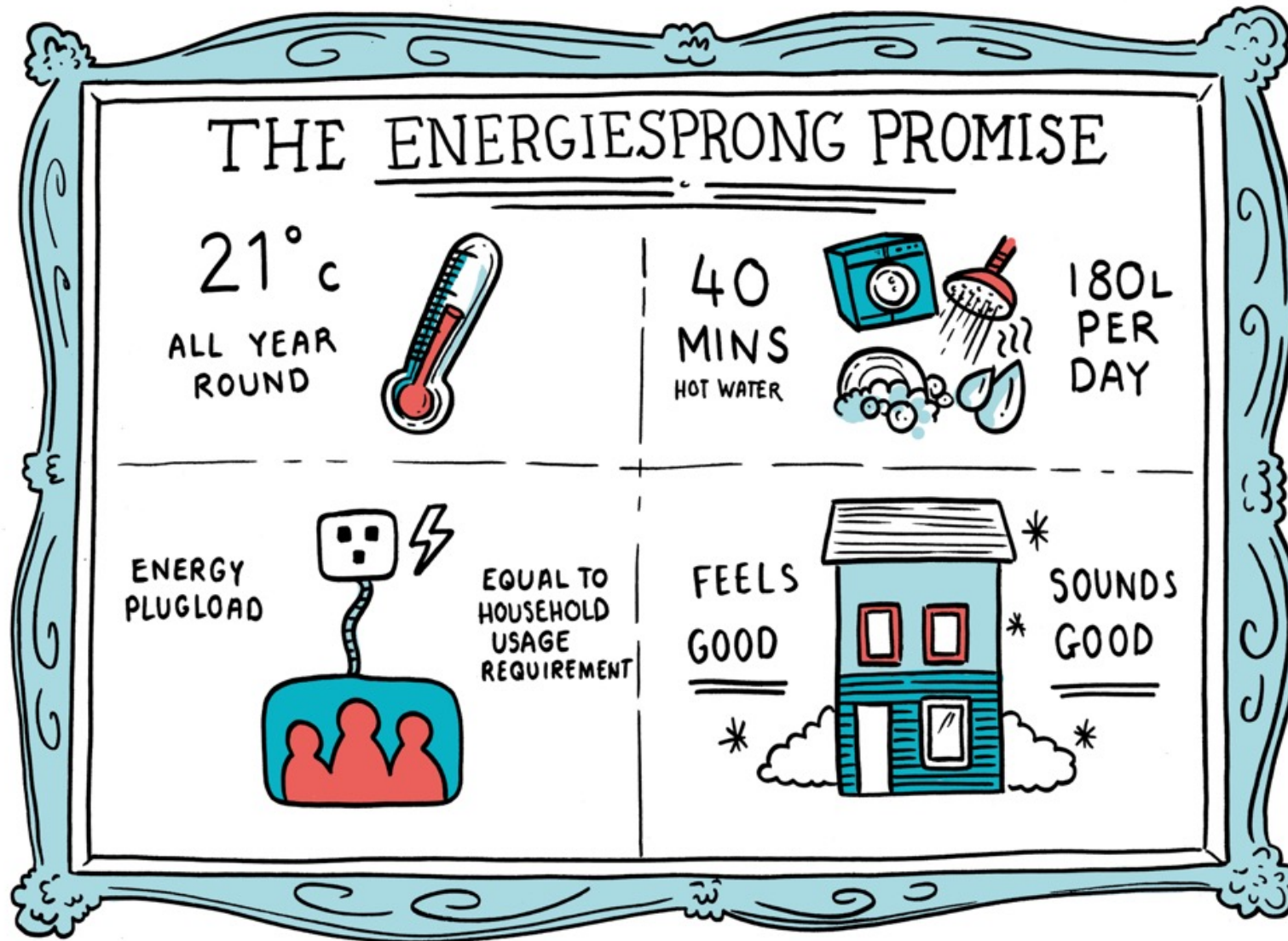


DESIGN

Looks & feels good – desirable product



Focus on people



Easy to understand product with

- Guaranteed comfort
- Fixed monthly cost

Create a market



Building the
movement:
**industry &
housing**

Proof of
concept:
demonstrators

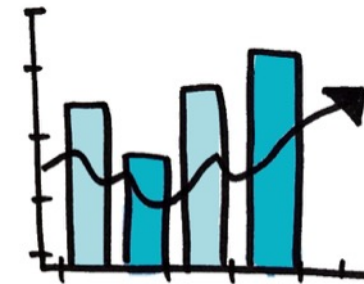


Energiesprong
Market
Development
Team



Commitment
to volume:
**new build &
retrofit**

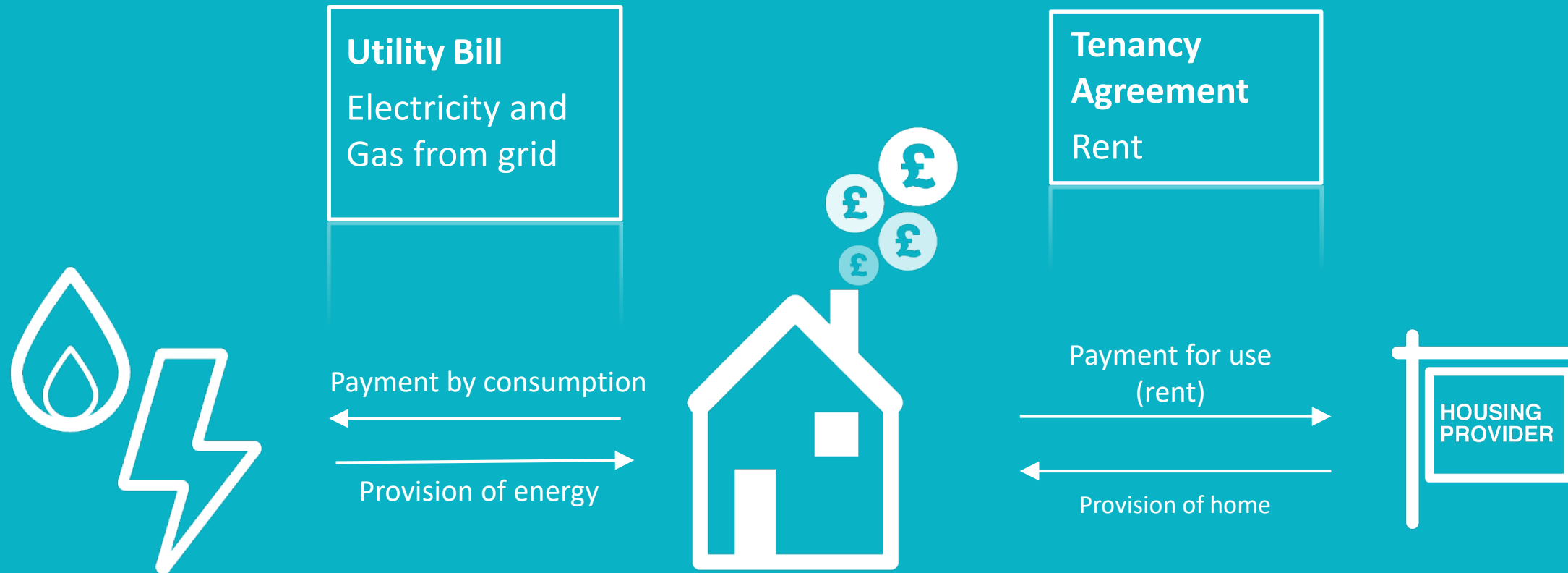
Preparing for
volume:
**business
case**



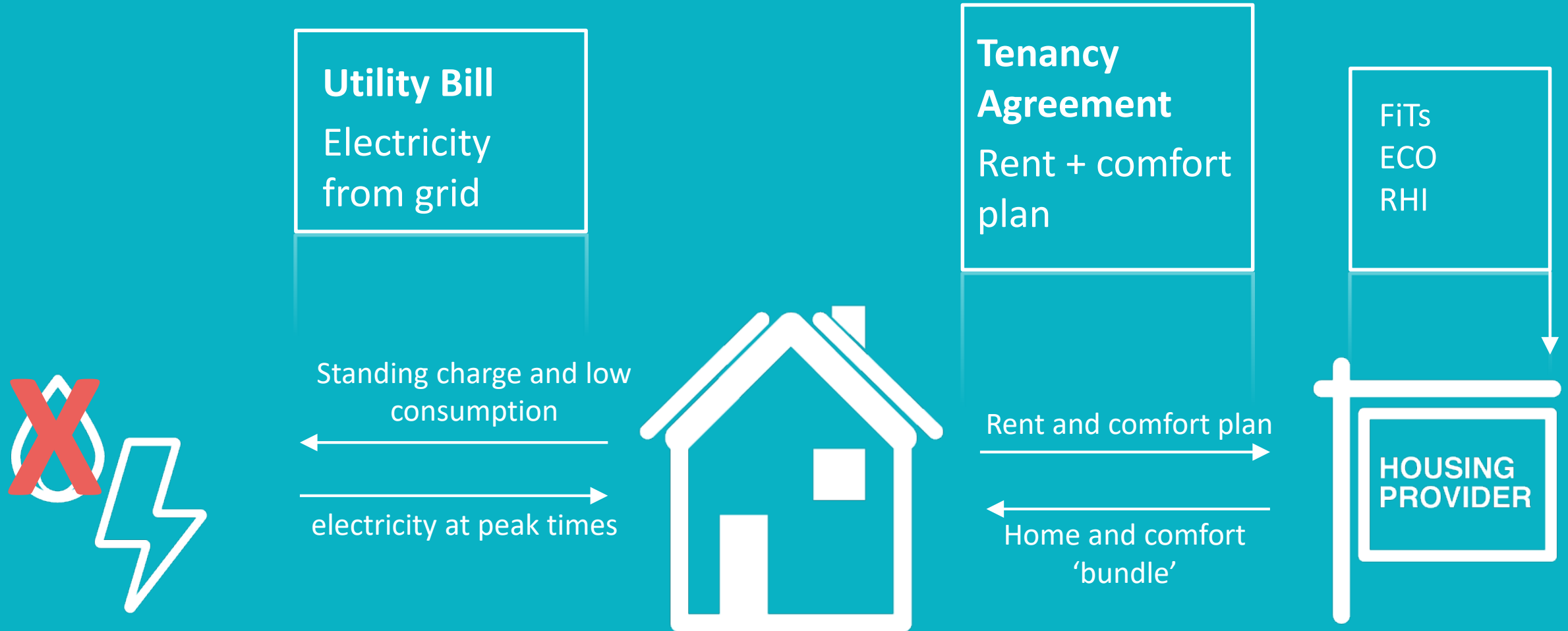
Commitment to volume



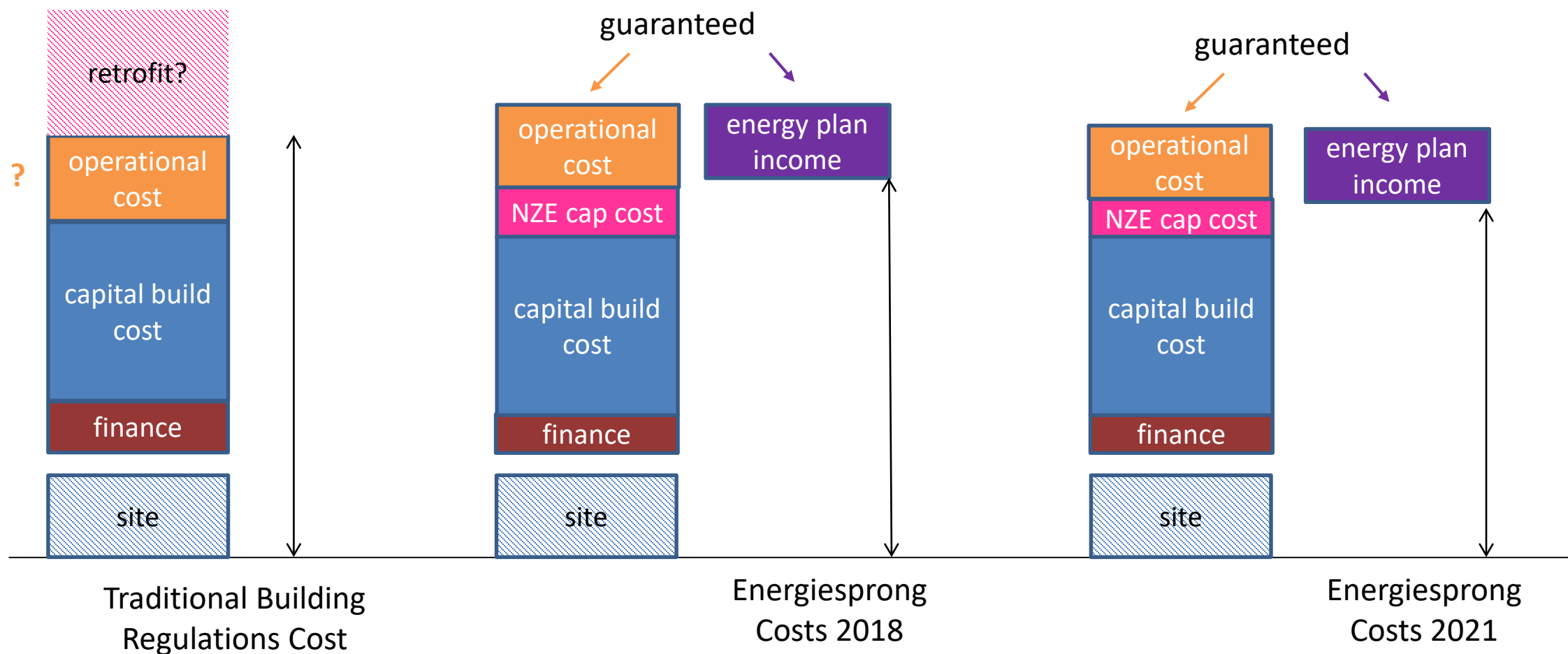
> Today: Rent & Utility Bills



> Tomorrow: Rent & Energy Services Plan



> New Build Net-zero energy, financially net-positive



> Volume up: Cost down



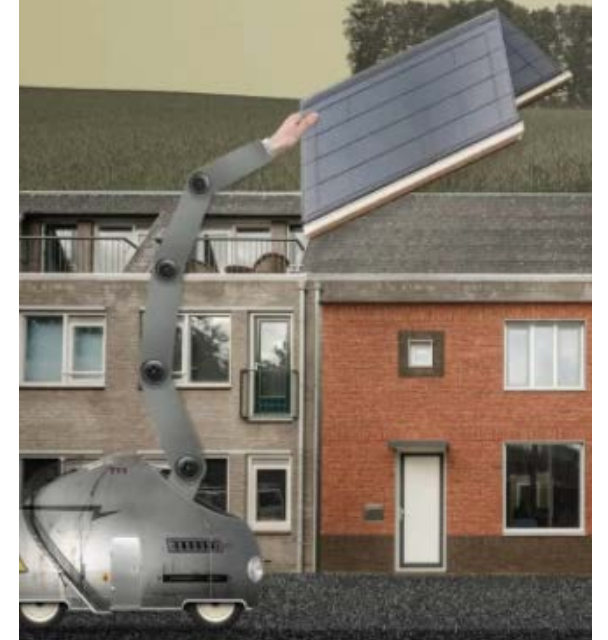
In-home - £25k



Gen I - Module - £17k

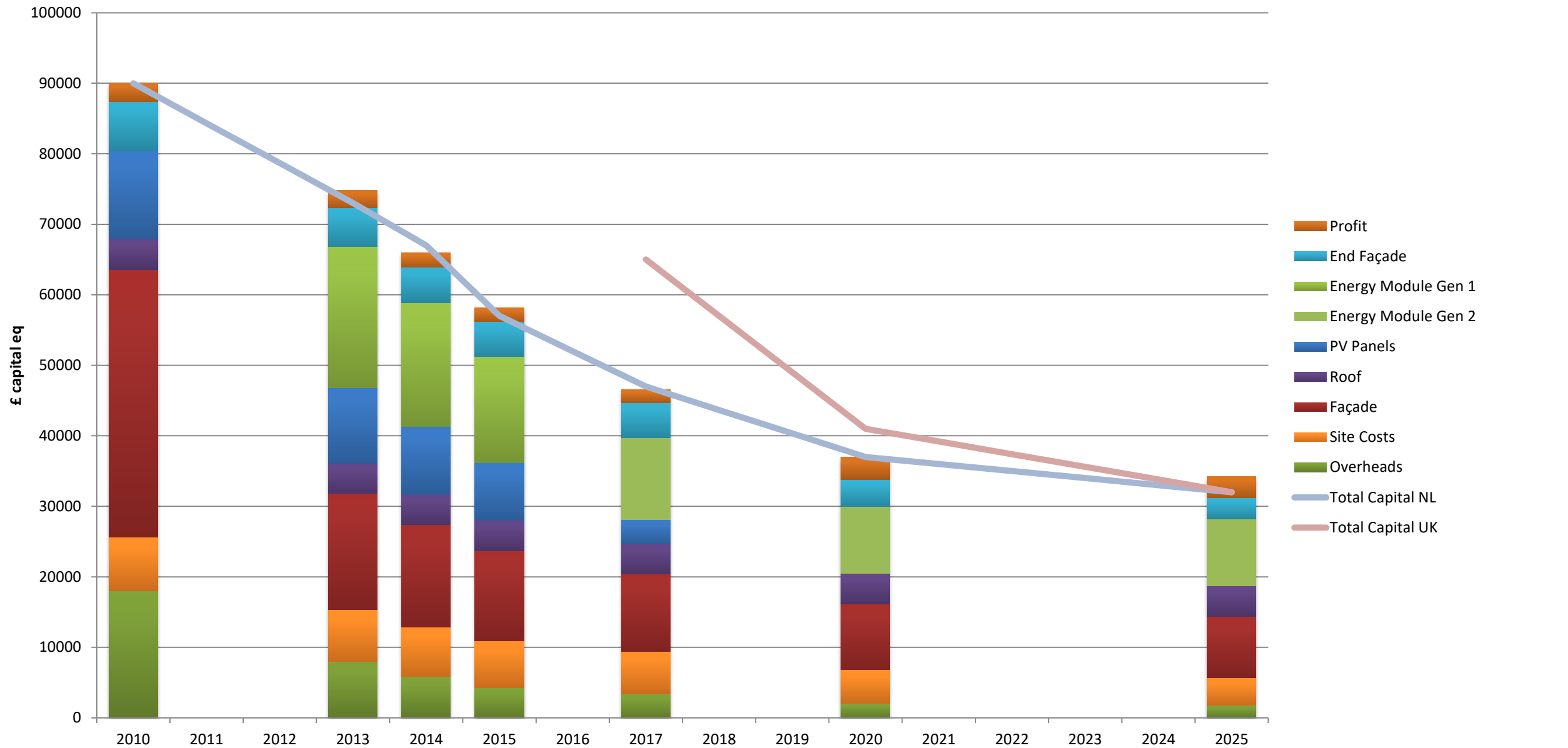


Gen II - £11k

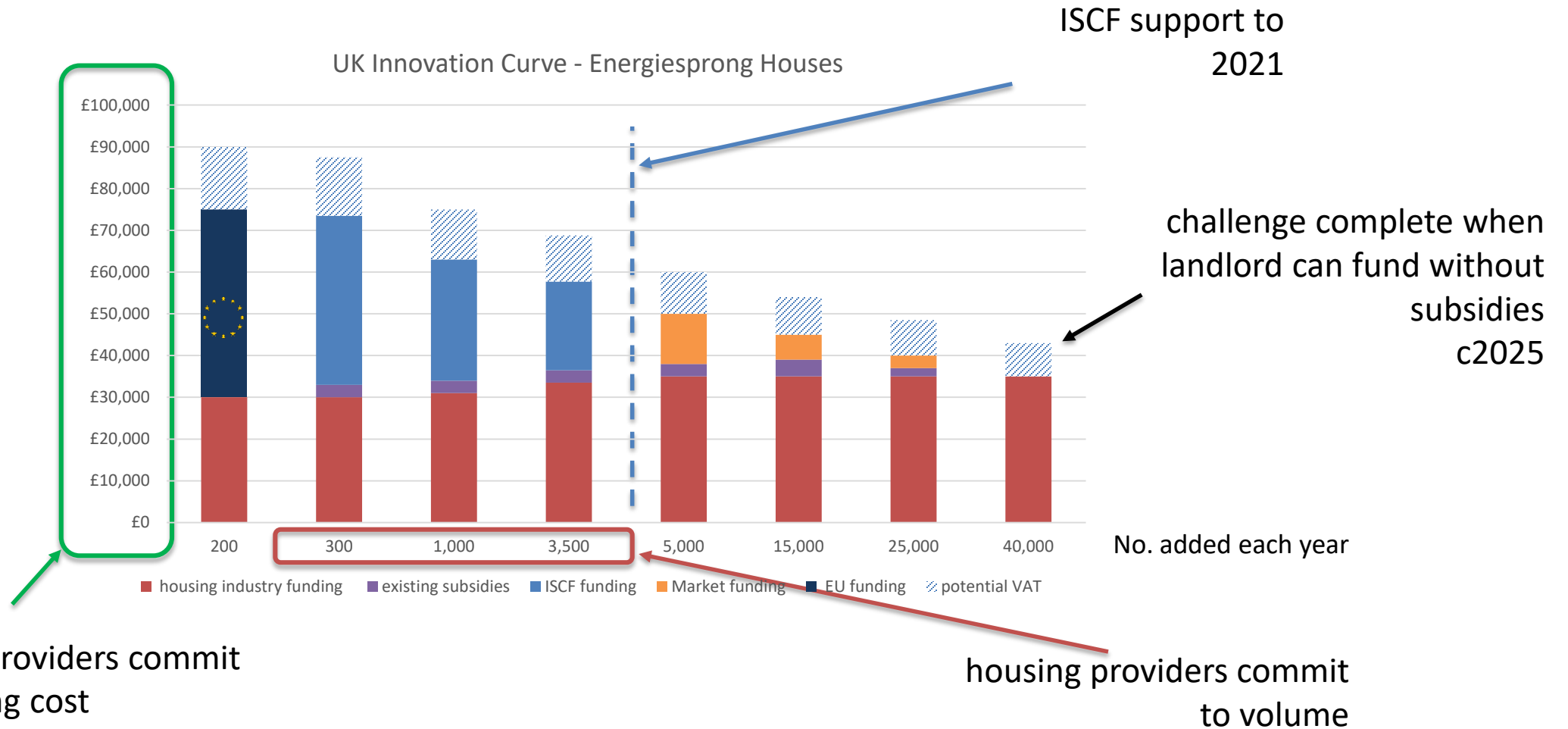


Gen III - Module in roof?

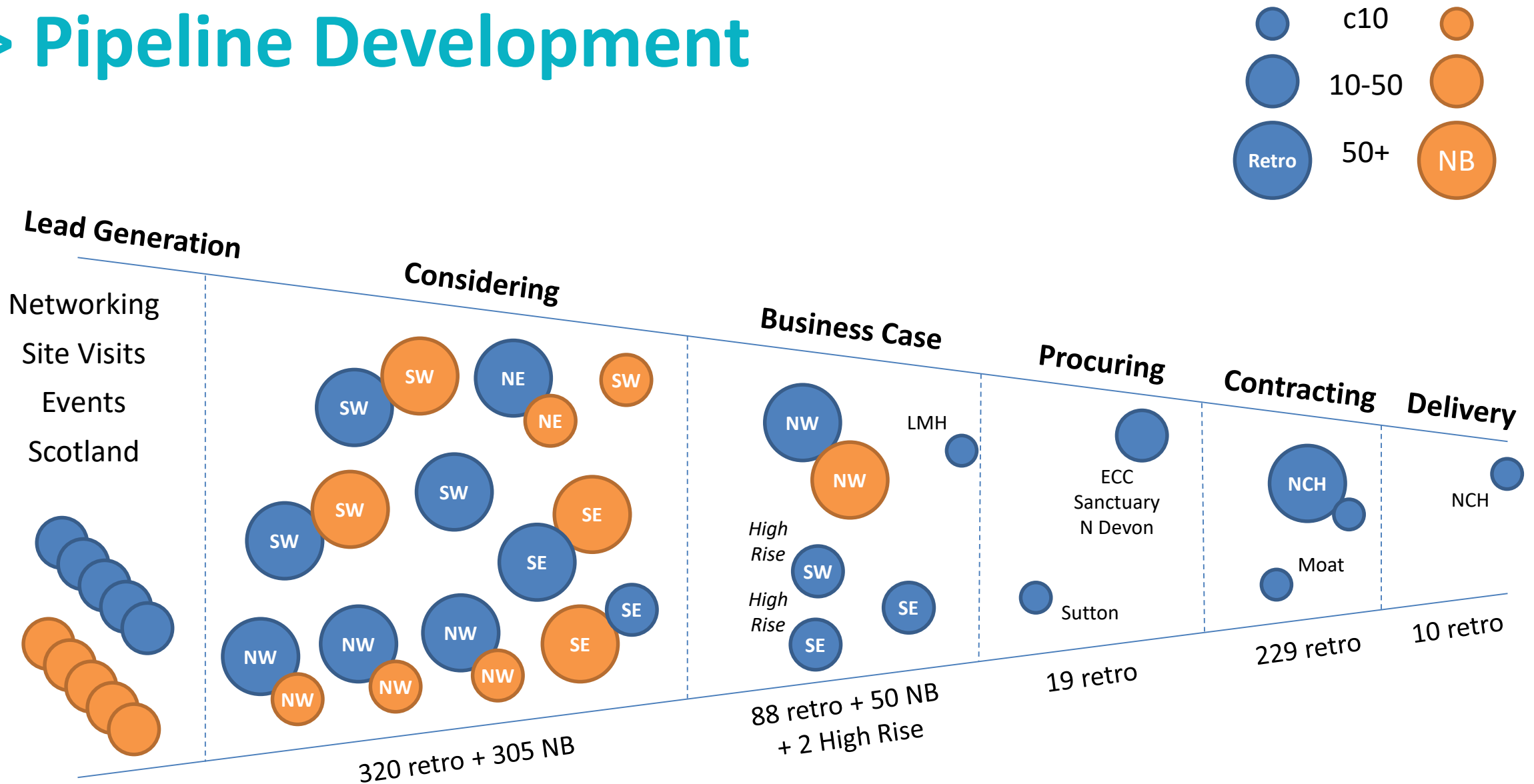
> Volume up: Cost down



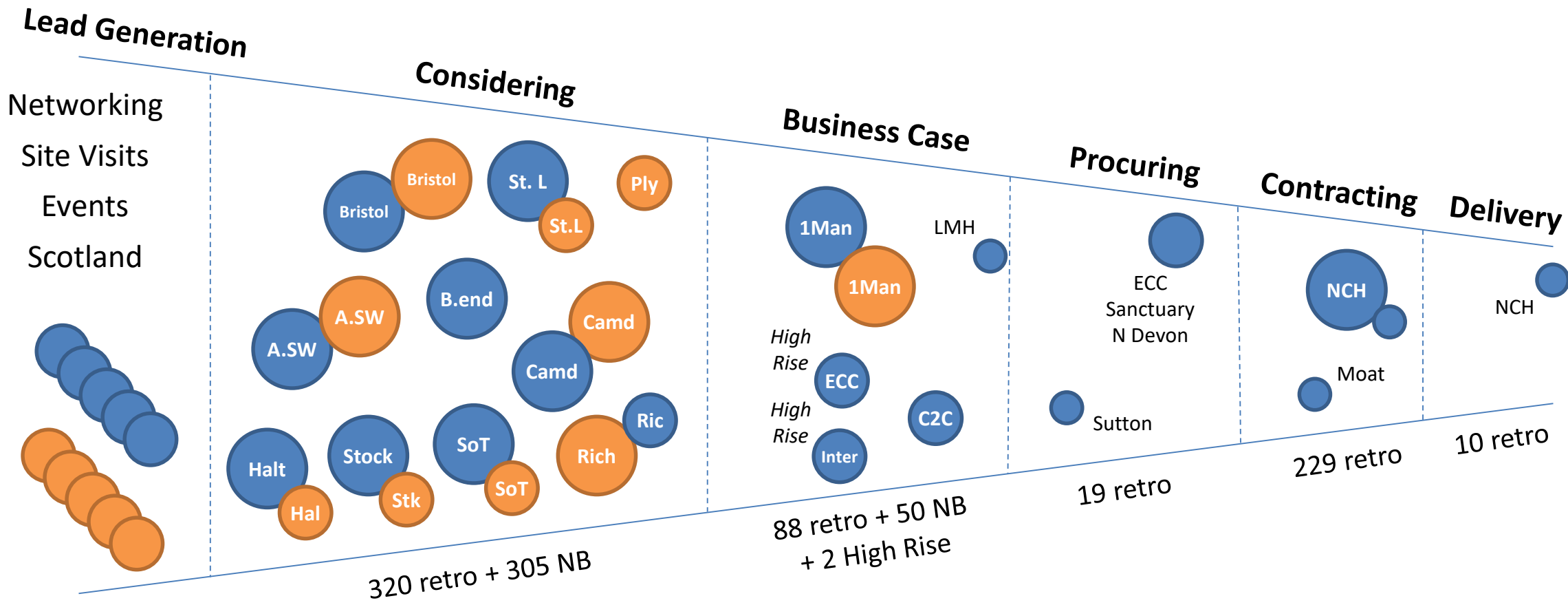
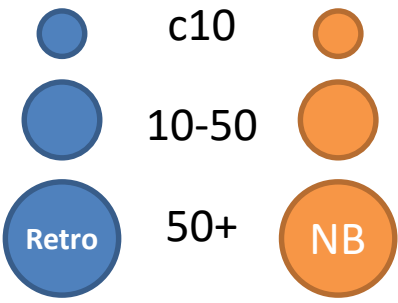
> Tapered Support - Ask of Government



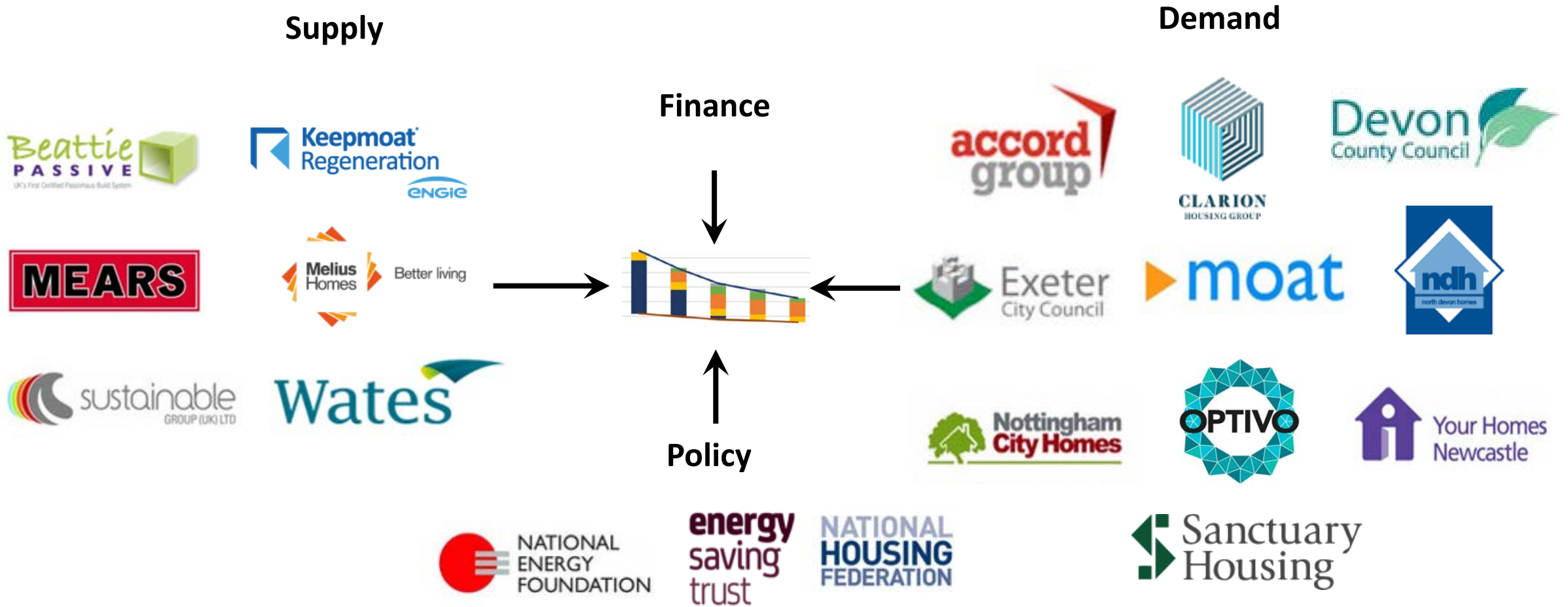
> Pipeline Development



> Pipeline Development



> Together we are creating a UK market



UK



NL



FR



DE



NY





Stay in touch

Ian Hutchcroft

Market Development Team

07947 985268

ian.hutchcroft@energiesprong.uk



*Energie
Sprong
uk*