



# Health and Wellbeing

SFHA Annual Conference 2018, Glasgow

**Andrew van Doorn**

[www.hact.org.uk](http://www.hact.org.uk)

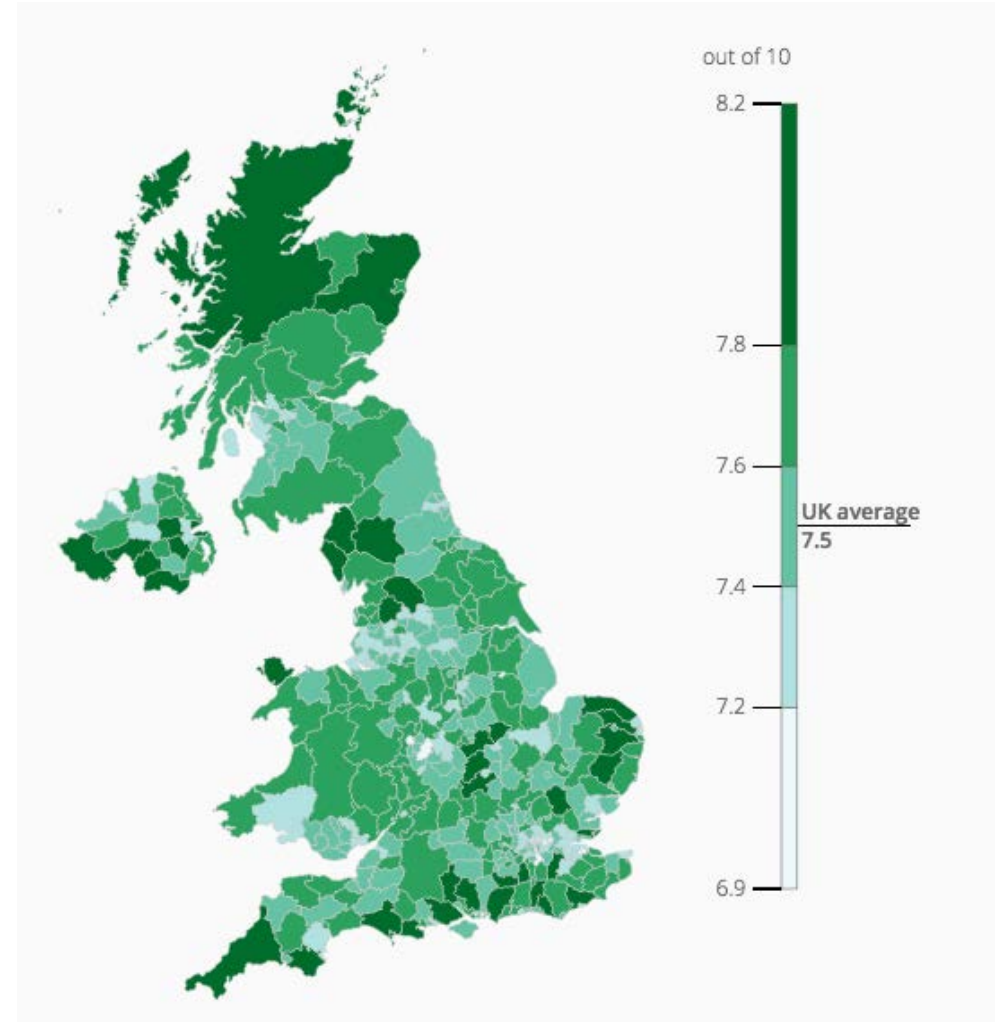


# Wellbeing as a public policy goal

Traditional economic measures are not capturing what is important

UK now has tools to measure wellbeing, including a What Works Centre for Wellbeing

It is recommended that every evaluation of a public service should include wellbeing measures





**£1.4  
BILLION**

The annual cost  
**OF POOR HOUSING**  
to the NHS

## Extreme pressure in all parts of healthcare

- Ageing population
- Right care in the right place
- Primary care
- Integrated care (with itself, housing and social care)
- Workforce
- Capital
- Inequality and inequity



# How can housing help the NHS?

---



Housing Options and discharge support

Aids and adaptations

Specialist supported housing

Step-up and crisis provision

Reablement and Rehabilitation

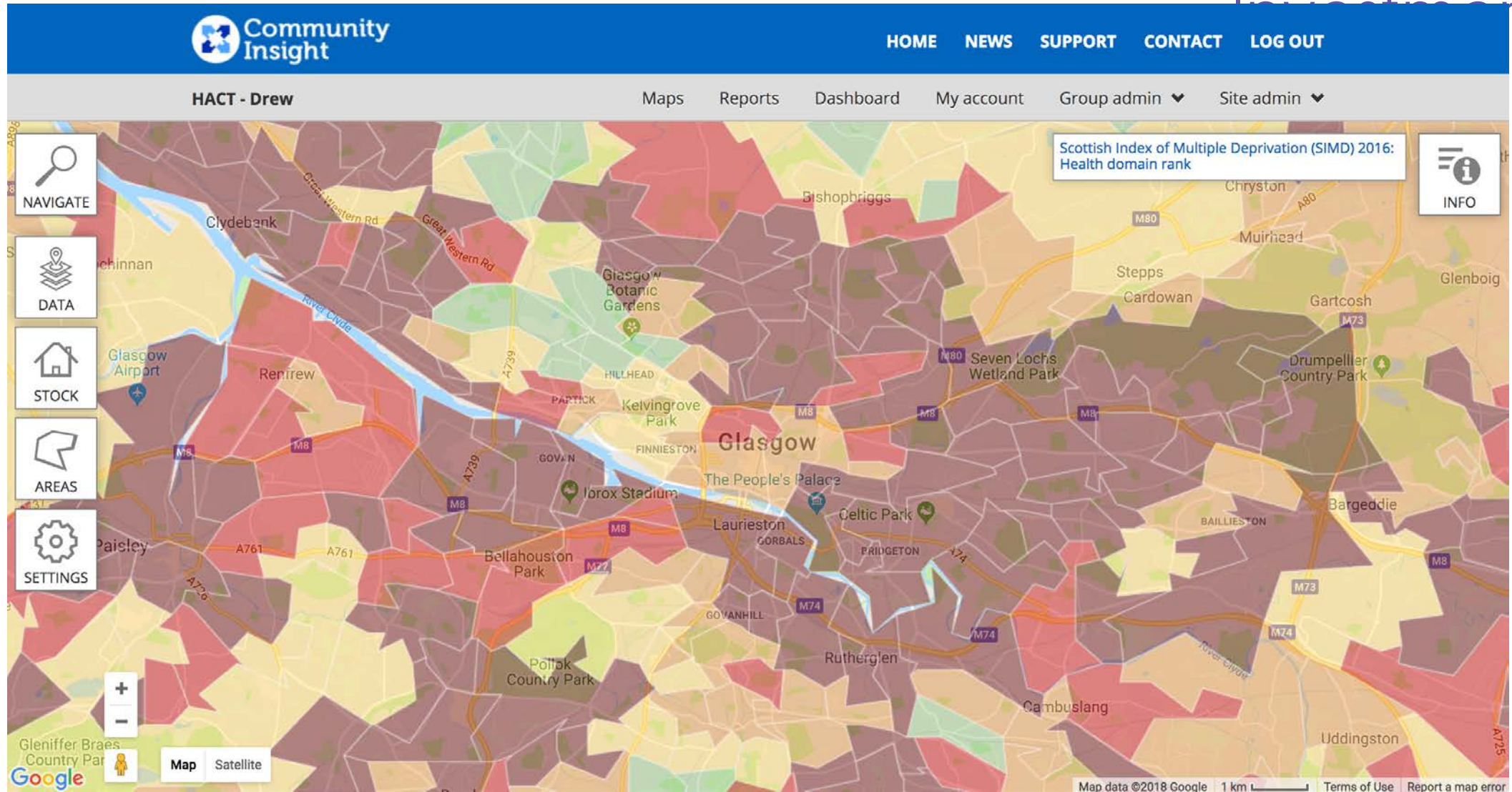
Workforce housing and training

Community connection

Social Prescribing



# The important role of Community



# Building the evidence base









**Free toolkits, guidance, case studies and calculators to download from the HACT website:**

<http://www.hact.org.uk/social-value-publications>

It's Time to  
Create &  
Innovate

Thank you

Andrew van Doorn  
andrew.vandoorn@hact.org.uk



[www.hact.org.uk](http://www.hact.org.uk)

020 7250 8500

49-51 East Rd, London